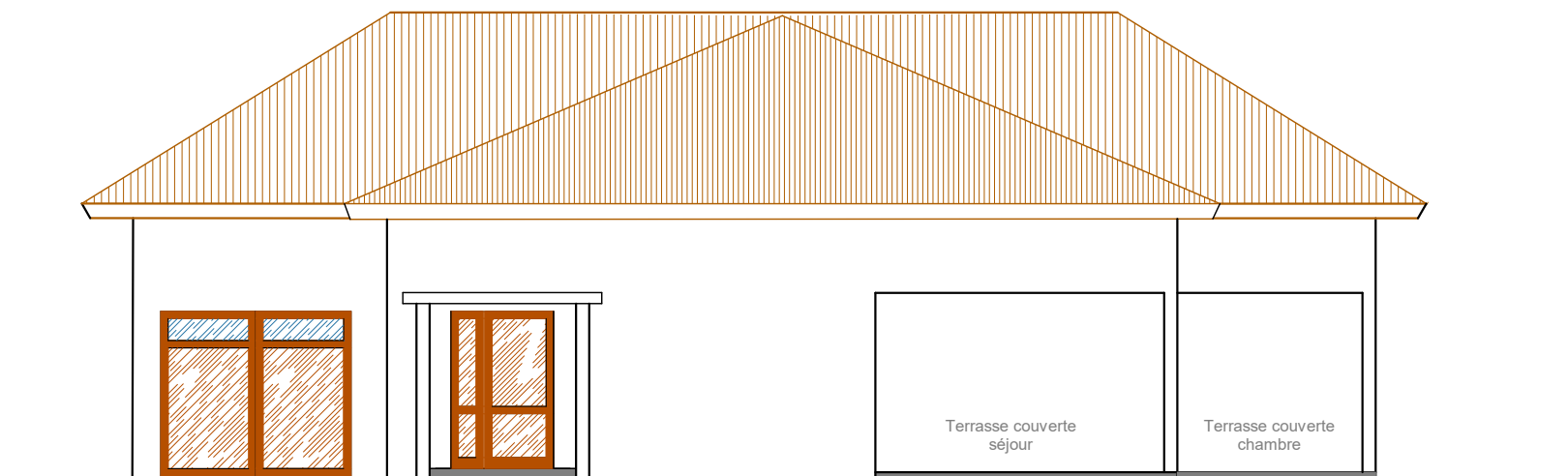
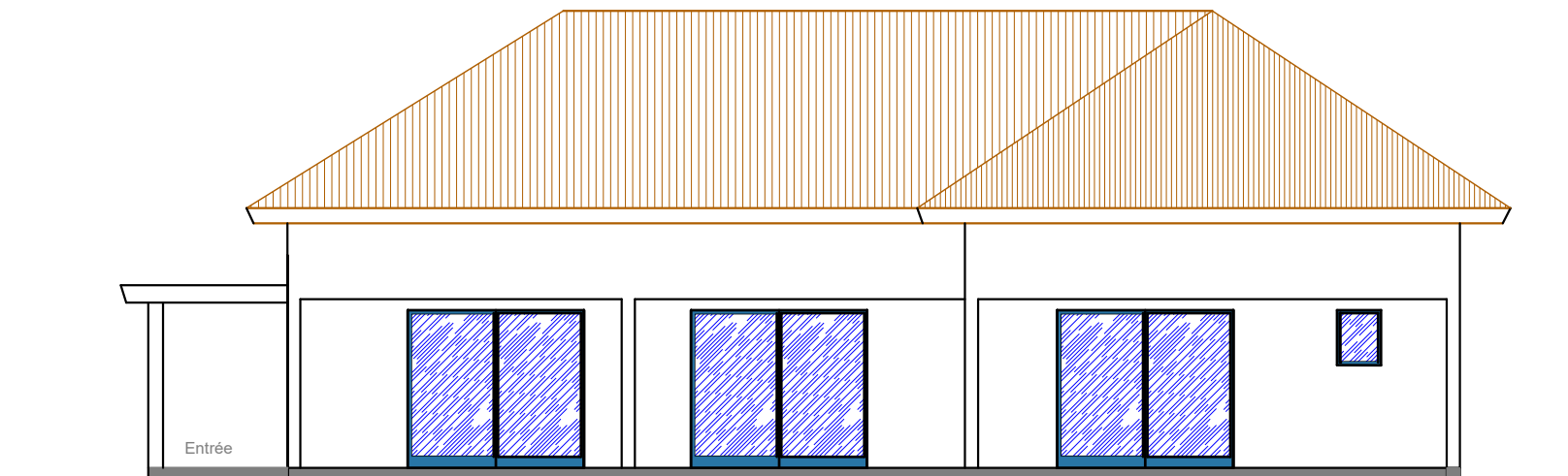
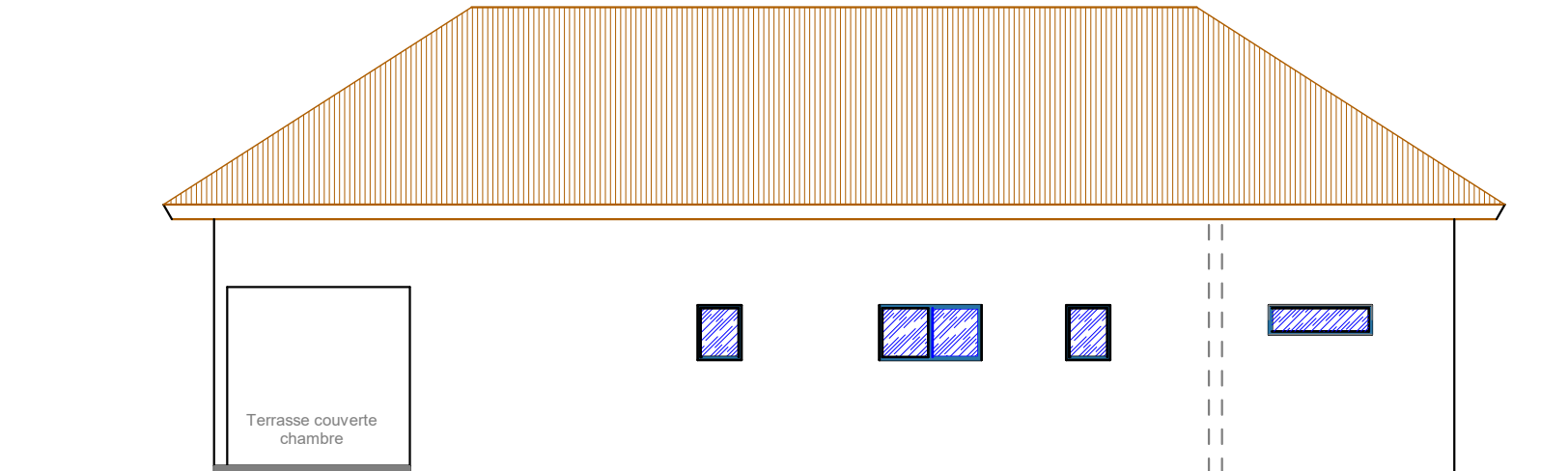
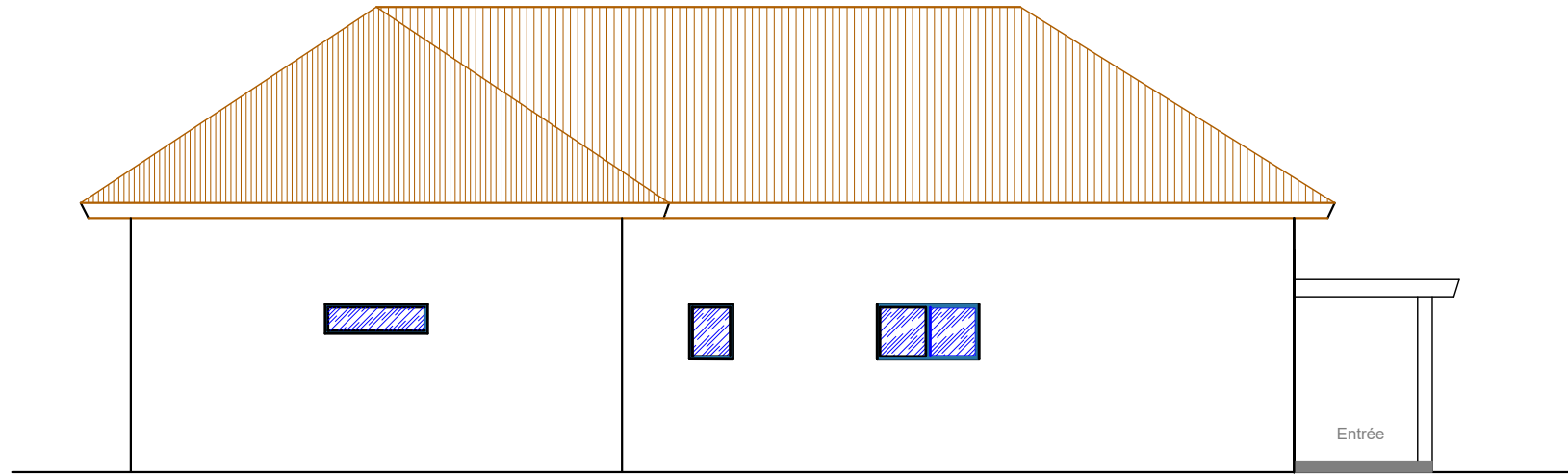
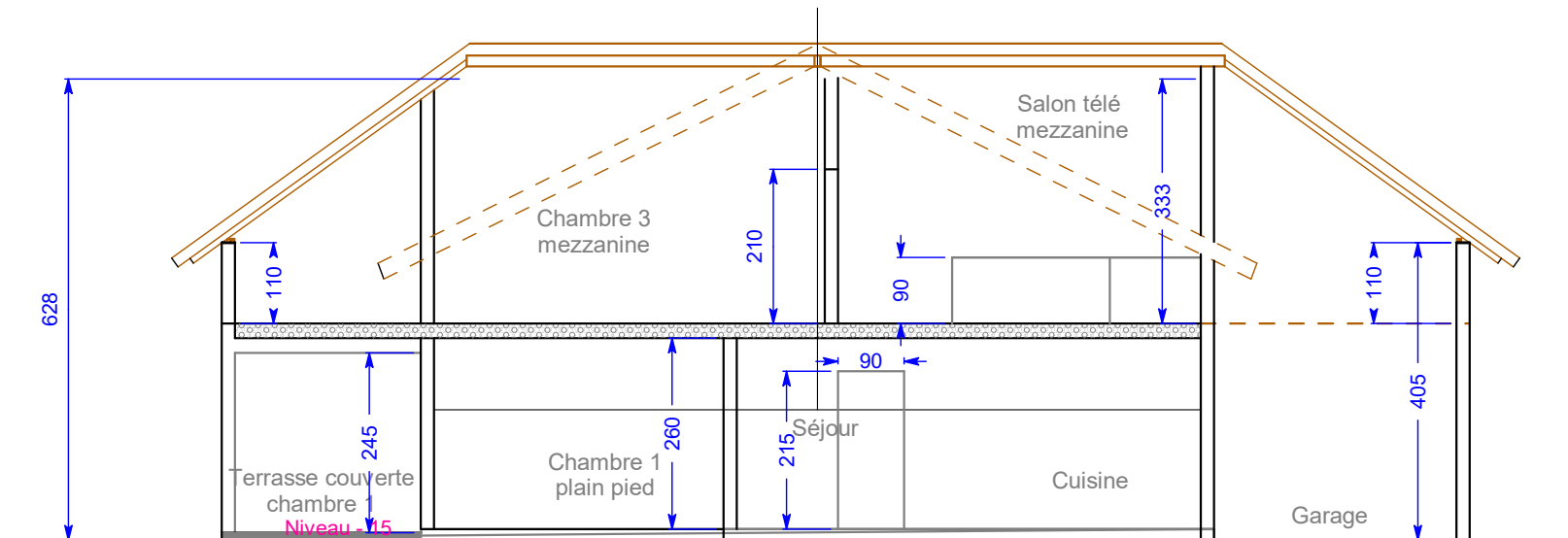
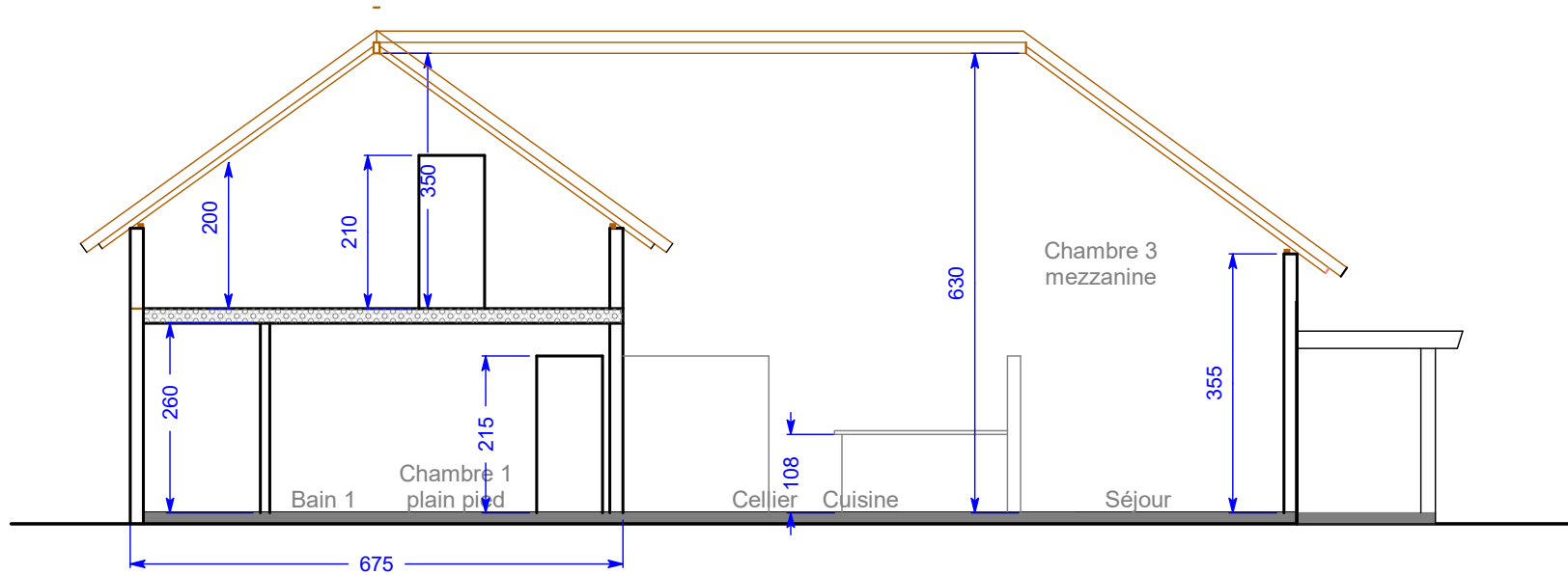


Pièces	Surfaces
Rez de chaussée	
Séjour	42,4
Cuisine	8,2
Cellier	4,6
Dégagement	6,0
Chambre 1	21,0
Salle de bain 1	5,4
WC 1	1,6
Chambre 2	14,6
Salle de bain 2	6,6
WC visiteurs	2,2
Mezzanine	
Mezzanine	28,2
Chambre 3	22,3
Dressing 3	5,4
Salle de bain 3	8,0
WC 3	1,8
SURFACE HABITABLE	178,3
Surfaces couvertes	
Mezzanine utile	15,4
Terrasse séjour et bar	35,5
Terrasse chambre 1	16,1
Auvent entrée	4,4
Garage	21,0
SURFACE UTILE	92,4
Total construit	270,7









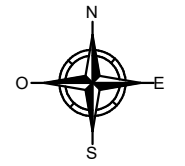
Lot 74 - 706 m²

Implantation
villa LOUDIA 3 ch mézzanine
piscine 3,5/9 m
V 20241114

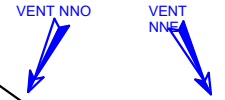
Lot 78

←←←←Allée vers entrée

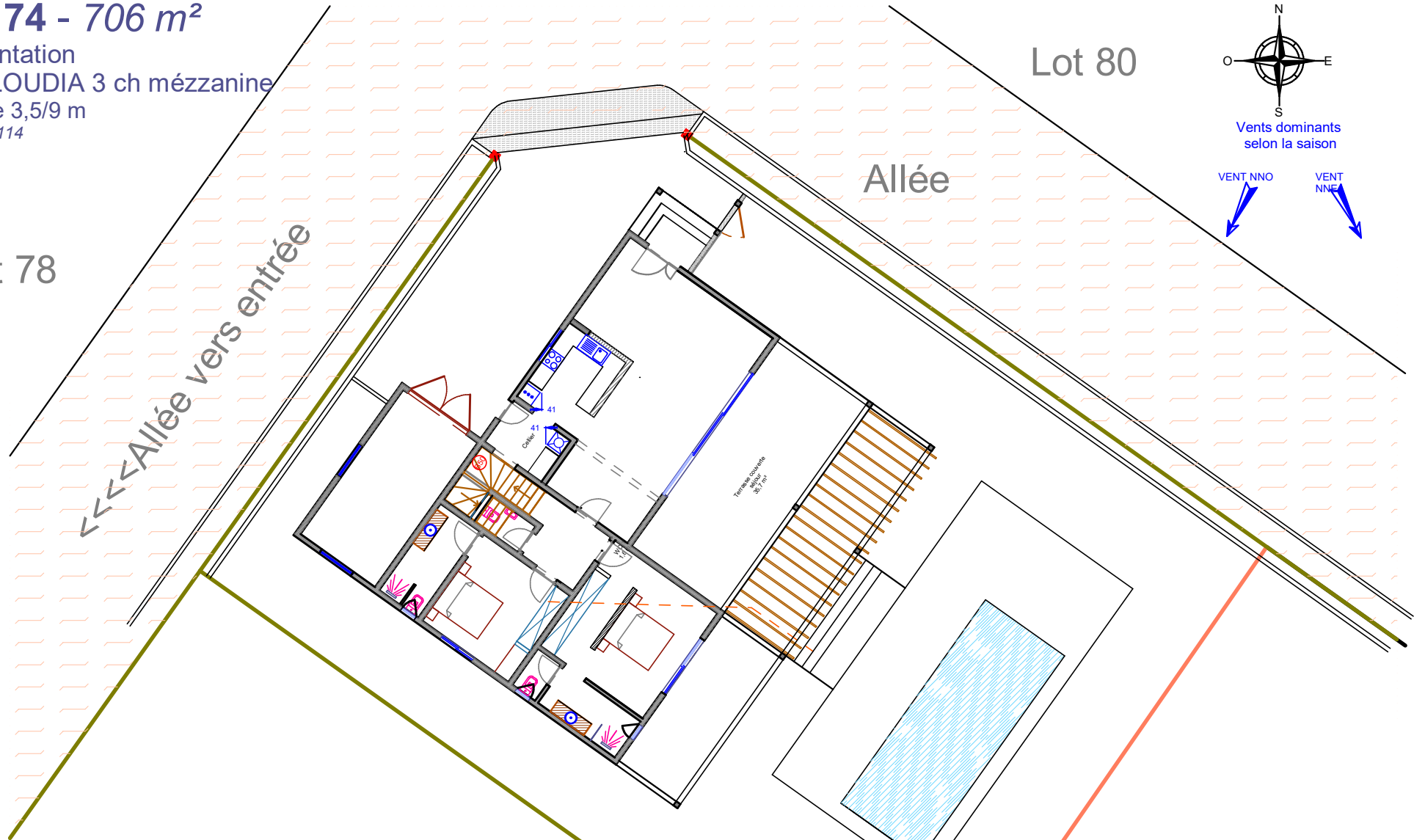
Lot 80



Vents dominants
selon la saison



Allée



Lot 73



CMAC
VIVRE AU SOLEIL

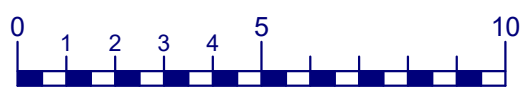
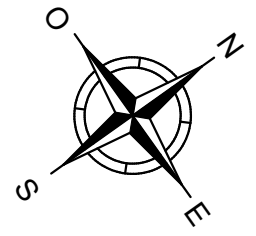
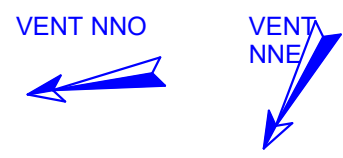
au Cap Skiring - Sénégal - Port.: + 221 77 369 88 88 - Fixe: + 221 33 993 54 54 - <https://www.lebalilai.com>

LE BALILAI
par CMAC

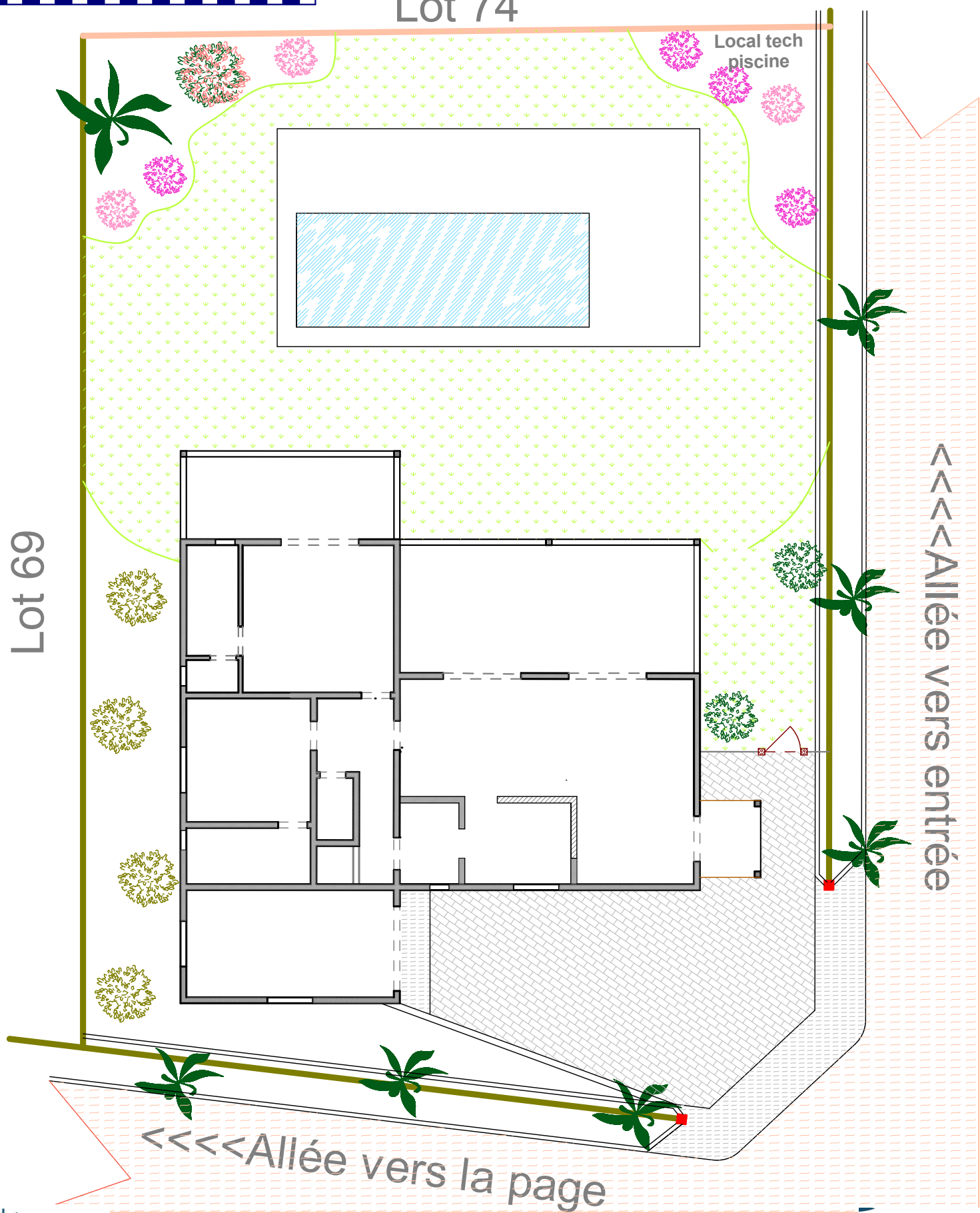


LE BALILAI Lot 70 - 744 m²
 implantation villa LOUDIA 3 ch mézzanine
 piscine 3,5/9 m
 V 20241114

Vents dominants
selon la saison



Lot 74



Lot 69

Local tech
piscine

<<<<Allée vers entrée

<<<<Allée vers la page





LE BALILAI

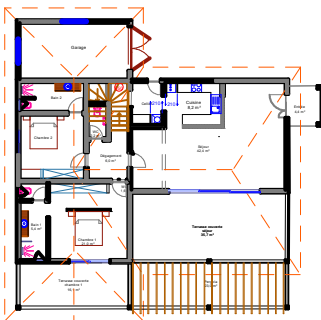
Résidence en bord de mer Plan de masse

V 20241120



- lots à vendre nus
- lots à vendre construits
- lots vendus
- Villa LOUDIA 3 CH avec mezzanine déjà construite

Villa LOUDIA avec mezzanine 3 chambres - 3 bains - 2 niv



CMAC

VIVRE AU SOLEIL

au Cap Skirring - Sénégal - Port.: + 221 77 369 88 88 - Fixe: + 221 33 993 54 54 - <https://www.lebalilai.com>

